



Leading European manufacturer
of fireplace stoves and fireplace inserts

Fireplace inserts



| CONTENT | page |
|--|----------|
| Romotop | 4 |
| Fireplace inserts | |
| KV 055A N | 5 |
| KV 055B N | 6 |
| KV 065A N | 7 |
| KV 055A | 8 |
| KV 055B | 9 |
| Fireplace inserts ANGLE | 10 |
| ANGLE L/R 2G L 66.44.44.01 | 11 |
| ANGLE L/R 2G L 66.44.44.05 | 12 |
| ANGLE L/R 2G S 66.44.44.01 | 13 |
| ANGLE L/R 2G S 66.44.44.05 | 14 |
| ANGLE L/R 2G L 88.51.44.01 | 15 |
| ANGLE L/R 2G L 88.51.44.05 | 16 |
| ANGLE L/R 2G S 88.51.44.01 | 17 |
| ANGLE L/R 2G S 88.51.44.05 | 18 |
| KV DYMANIC 2G 44.55.01 | 19 |
| KV DYMANIC B2G 44.55.01 | 20 |
| KV 025L N | 21 |
| KV 025L | 22 |
| KV 025F | 23 |
| KV 025N | 24 |
| KV 025N BD | 25 |
| KV 025W | 26 |
| KV 025W BD | 27 |
| KV 075 | 28 |
| KV 075W | 29 |
| KV 6.6.2 | 30 |
| KV 6.6.2 TV | 31 |
| KV 6.6.3 L/R | 32 |
| KV 6.6.3 C | 33 |
| KV 6.6.4 | 34 |
| KV RIO W 01 | 35 |
| Technical parameters for fireplace inserts | 36-37 |
| Legend | 38 |



Almost 700,000 households all around the world enjoy ROMOTOP products today. Every product that leaves the production plant in Suchdol nad Odrou is a result of the joint effort of all our employees. Our state-of-the-art production facilities, competent employees and qualified professional sales representatives make ROMOTOP one of the leading brands in its field in Europe. ROMOTOP stoves and inserts offer customers a modern design, high-quality technical workmanship and an innovative wood burning process. A wide range of products cater to the needs of both standard and low-energy houses. Heat energy can be stored in accumulation tiles or distributed around the house using hot-water exchangers. Customers can select from hand-made ceramic or natural stone tiling.

Fireplace insert 055A N

KV 055A N KV 055A N reduction

An insert fireplace design with retractable lift door, including smooth stop

- design: fireplace insert
- flat glass
- retractable lift door (including smooth stop)
- primar and secondary air controls
- CAI - central air intake
- intended for convection operation
- build-up dimensions: 886 x 442 mm

| | |
|------------------|---------|
| P | 9.5 kW |
| P _{st} | 6-14 kW |
| P _{st} | - kW |
| ↑ | 1432 mm |
| ↔ | 1014 mm |
| ↗ | 588 mm |
| Ø | 180 mm |
| Ø _{CPV} | 150 mm |
| ⌊ | 298 kg |
| % | 80 % |



Detailed technical data for all designs are available on pages 36-37.

Fireplace insert 055B N

KV 055B N KV 055B N reduction

An insert fireplace design with retractable lift door, including smooth stop

- design: fireplace insert
- straight glazing
- extending door with trailing
- primary and secondary air controls
- CAI – central air intake
- intended for convection operation
- build-up dimensions: 666 x 443 mm

| | |
|------------------|---------|
| P | 9.5 kW |
| P _{st} | 6–14 kW |
| P _{st} | – kW |
| ↑ | 1432 mm |
| ↔ | 794 mm |
| ↗ | 588 mm |
| Ø | 180 mm |
| Ø _{CPV} | 150 mm |
| ⬮ | 258 kg |
| % | 80 % |



Detailed technical data for all designs are available on pages 36-37.

Fireplace insert 065A N

KV 065A N

An insert fireplace design with retractable lift door, including smooth stop

- design: fireplace insert
- flat glass
- retractable lift door (including smooth stop)
- primary and secondary air controls
- CAI – central air intake
- intended for convection operation
- build-up dimensions: 1106 x 512 mm

| | |
|------------------|---------|
| P | 12 kW |
| P _{st} | 8–16 kW |
| P _{st} | – kW |
| ↑ | 1432 mm |
| ↔ | 1234 mm |
| ↗ | 588 mm |
| Ø | 250 mm |
| Ø _{CPV} | 150 mm |
| ⬮ | 338 kg |
| % | 80 % |



Detailed technical data for all designs are available on pages 36-37.

Fireplace insert 055A

KV 055A
KV 055A reduction
An insert fireplace
design with retractable
lift door, including
smooth stop

- design: fireplace insert
- flat glass
- extending lift door
- primary and secondary air controls
- CAI - central air intake
- intended for convection operation
- build-up dimensions: 886 x 443 mm

| | |
|------------------|---------|
| P | 9.5 kW |
| P _{st} | 6-14 kW |
| P _{st} | - kW |
| ↑ | 1451 mm |
| ↔ | 968 mm |
| ↗ | 520 mm |
| Ø | 180 mm |
| Ø _{CPV} | 150 mm |
| ⬮ | 235 kg |
| % | 80 % |



Detailed technical data for all designs are available on pages 36-37.

Fireplace insert 055B

KV 055B
KV 055B reduction
An insert fireplace
design with retractable
lift door, including
smooth stop

- design: fireplace insert
- flat glass
- extending lift door
- primary and secondary air controls
- CAI - central air intake
- intended for convection operation
- build-up dimensions: 666 x 442 mm

| | |
|------------------|---------|
| P | 9.5 kW |
| P _{st} | 6-14 kW |
| P _{st} | - kW |
| ↑ | 1451 mm |
| ↔ | 747 mm |
| ↗ | 520 mm |
| Ø | 180 mm |
| Ø _{CPV} | 150 mm |
| ⬮ | 200 kg |
| % | 80 % |



Detailed technical data for all designs are available on pages 36-37.

New line of design fireplace inserts ANGLE

technical innovations

double spin



Complete redesign of flue gas distribution system:

- DOUBLE SPIN flue gas system
- increased efficiency and reduced emissions



ROMOTOP convection flaps:

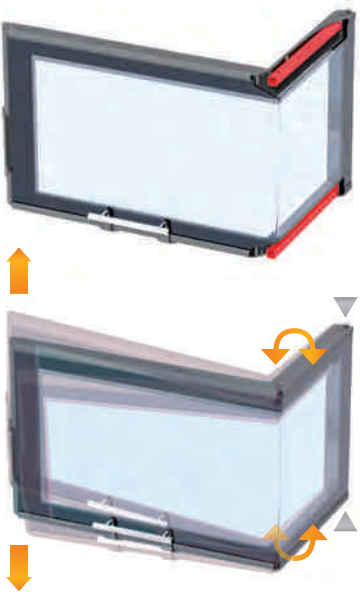
- better dissipation of excess heat from the space above the door
- significantly longer service life of the running gear
- maintains convection tightness
- flaps are shut whenever the door is even slightly ajar (open)

New system for door suspension using a centre of gravity:

- minimization of the stress on the door frame and the gearing

High-load capacity, professional ball bearing running gear:

- provides precise door alignment and perfect fit of the doors = tightness of the combustion chamber
- distribution of stress onto a large number of rolling elements = long service life
- placement of running gears on the outside of the fireplace insert



Torsionally reinforced door frame:

- provides maximum rigidity to frame
- minimizes the possibility of deformation of the door and subsequent cracking of glazing

Fireplace insert ANGLE L/R 2G L 66.44.44.01

AL2LE 01, AR2LE 01
An insert fireplace design
with bent corner glazing

- right as well as left corner design options
- intended for convection operation
- double spin flue gas management
- retractable lift door (including smooth stop)
- grate and grate-free furnace options
- CAI - central air intake
- build-up dimensions: 664 x 442 x 444 mm

| | |
|------------------|---------|
| P | 7 kW |
| P _r | 4-11 kW |
| P _a | - kW |
| ↑ | 1430 mm |
| → | 743 mm |
| ↗ | 605 mm |
| ∅ | 200 mm |
| ∅ _{CPV} | 150 mm |
| ⏏ | 265 kg |
| % | 85 % |



double spin

Detailed technical data for all designs are available on pages 36-37

Fireplace insert
ANGLE L/R 2G
L 66.44.44.05

AL2LE 05, AR2LE 05
An insert fireplace design
with split corner glazing

- right as well as left corner design options
- intended for convection operation
- double spin flue gas management
- retractable lift door (including smooth stop)
- grate and grate-free furnace options
- CAI – central air intake
- build-up dimensions: 664 x 442 x 444 mm

| | |
|------------------|---------|
| P | 7 kW |
| P _r | 4–11 kW |
| P _a | – kW |
| ↑ | 1430 mm |
| ↔ | 743 mm |
| ↗ | 605 mm |
| Ø | 200 mm |
| Ø _{CPV} | 150 mm |
| ⬮ | 265 kg |
| % | 85 % |



double spin

Detailed technical data for all designs are available on pages 36–37

Fireplace insert
ANGLE L/R 2G
S 66.44.44.01

AL2SE 01, AR2SE 01
An insert fireplace design
with bent corner glazing

- right as well as left corner design options
- intended for convection as well as accumulation operation
- double spin flue gas management
- grate and grate-free furnace options
- CAI – central air intake
- build-up dimensions: 681 x 442 x 444 mm

| | |
|------------------|---------|
| P | 7 kW |
| P _r | 4–11 kW |
| P _a | – kW |
| ↑ | 1348 mm |
| ↔ | 741 mm |
| ↗ | 568 mm |
| Ø | 200 mm |
| Ø _{CPV} | 150 mm |
| ⬮ | 195 kg |
| % | 85 % |



double spin

Detailed technical data for all designs are available on pages 36–37

Fireplace insert
ANGLE L/R 2G
S 66.44.44.05

AL2SE 05, AR2SE 05
An insert fireplace design
with split corner glazing

- right as well as left corner design options
- intended for convection as well as accumulation operation
- double spin flue gas management
- grate and grate-free furnace options
- CAI – central air intake
- build-up dimensions: 681 x 442 x 444 mm

| | |
|------------------|---------|
| P | 7 kW |
| P _r | 4–11 kW |
| P _a | – kW |
| ↑ | 1348 mm |
| ↔ | 741 mm |
| ↗ | 568 mm |
| Ø | 200 mm |
| Ø _{CPV} | 150 mm |
| ⬮ | 195 kg |
| % | 85 % |



double spin

Detailed technical data for all designs are available on pages 36–37

Fireplace insert
ANGLE L/R 2G
L 88.51.44.01

AL2LF 01, AR2LF 01
An insert fireplace design
with bent corner glazing

- right as well as left corner design options
- intended for convection operation
- double spin flue gas management
- retractable lift door (including smooth stop)
- grate and grate-free furnace options
- CAI – central air intake
- build-up dimensions: 963 x 512 x 444 mm

| | |
|------------------|---------|
| P | 12 kW |
| P _r | 8–16 kW |
| P _a | – kW |
| ↑ | 1430 mm |
| ↔ | 963 mm |
| ↗ | 605 mm |
| Ø | 200 mm |
| Ø _{CPV} | 150 mm |
| ⬮ | 320 kg |
| % | 83 % |



double spin

Detailed technical data for all designs are available on pages 36–37

Fireplace insert
ANGLE L/R 2G
L 88.51.44.05

AL2LF 05, AR2LF 05
An insert fireplace design
with split corner glazing

- right as well as left corner design options
- intended for convection operation
- double spin flue gas management
- retractable lift door (including smooth stop)
- grate and grate-free furnace options
- CAI – central air intake
- build-up dimensions: 963 x 512 x 444 mm

| | |
|------------------|---------|
| P | 12 kW |
| P _r | 8-16 kW |
| P _a | – kW |
| ↑ | 1430 mm |
| ↔ | 963 mm |
| ↗ | 605 mm |
| Ø | 200 mm |
| Ø _{CPV} | 150 mm |
| ⬮ | 320 kg |
| % | 83 % |



double spin

Detailed technical data for all designs are available on pages 36-37

Fireplace insert
ANGLE L/R 2G
S 88.51.44.01

AL2SF 01, AR2SF 01
An insert fireplace design
with bent corner glazing

- right as well as left corner design options
- intended for convection as well as accumulation operation
- double spin flue gas management
- grate and grate-free furnace options
- CAI – central air intake
- build-up dimensions: 901 x 516 x 453 mm

| | |
|------------------|---------|
| P | 12 kW |
| P _r | 8-16 kW |
| P _a | – kW |
| ↑ | 1418 mm |
| ↔ | 961 mm |
| ↗ | 568 mm |
| Ø | 200 mm |
| Ø _{CPV} | 150 mm |
| ⬮ | 245 kg |
| % | 83 % |



double spin

Detailed technical data for all designs are available on pages 36-37

Fireplace insert
ANGLE L/R 2G
S 88.51.44.05

AL2SF 05, AR2SF 05
An insert fireplace design
with split corner glazing

- right as well as left corner design options
- intended for convection as well as accumulation operation
- double spin flue gas management
- grate and grate-free furnace options
- CAI – central air intake
- build-up dimensions: 901 x 516 x 453 mm

| | |
|------------------|---------|
| P | 12 kW |
| P _r | 8-16 kW |
| P _a | – kW |
| ↑ | 1418 mm |
| ↔ | 961 mm |
| ↗ | 568 mm |
| Ø | 200 mm |
| Ø _{CPV} | 150 mm |
| ⬮ | 245 kg |
| % | 83 % |



double spin

Detailed technical data for all designs are available on pages 36-37.

Fireplace insert
DYNAMIC
2G 44.55.01

D2L.01
An insert fireplace design with
even, double reflective glazing

- vertical, even frame and door
- double reflective glazing
- CAI – central air intake
- design printed glazing
- intended for convection as well as accumulation operation
- special COR-TEN steel sheeting
- new DOUBLE SPIN flue gas system
- build-up dimensions: 440 x 550 mm

| | |
|------------------|---------|
| P | 75 kW |
| P _r | 5-12 kW |
| P _a | – kW |
| ↑ | 1140 mm |
| ↔ | 524 mm |
| ↗ | 479 mm |
| Ø | 200 mm |
| Ø _{CPV} | 150 mm |
| ⬮ | 160 kg |
| % | 85 % |



double spin

Detailed technical data for all designs are available on pages 36-37.

Fireplace insert

DYNAMIC

B2G 44.55.01

DB2L.01
An insert fireplace design with back stoking, double reflective glazing

- vertical, even frame and door
- double reflective glazing
- CAI – central air intake
- design printed glazing
- intended for convection as well as accumulation operation
- special COR-TEN steel sheeting
- new DOUBLE SPIN flue gas system
- back stoking
- build-up dimensions: 440 x 550 mm

| | |
|------------------|---------|
| P | 75 kW |
| P _r | 5-12 kW |
| P _a | – kW |
| ↑ | 1140 mm |
| ↔ | 524 mm |
| ↗ | 541 mm |
| Ø | 200 mm |
| Ø _{CPV} | 150 mm |
| ⬮ | 175 kg |
| % | 85 % |



double spin

Detailed technical data for all designs are available on pages 36-37.

Fireplace insert

025L N 01

KV 025L N 01
An insert fireplace design, wide straight door, double reflective glazing

- horizontal, straight frame and door
- double reflective glazing
- CAI – central air intake
- design printed glazing
- intended for convection as well as accumulation operation
- tertiary air intake
- special COR-TEN steel sheeting
- new DOUBLE SPIN flue gas system
- build-up dimensions: 660 x 550 mm

| | |
|------------------|---------|
| P | 11 kW |
| P _r | 7-16 kW |
| P _a | – kW |
| ↑ | 1131 mm |
| ↔ | 722 mm |
| ↗ | 555 mm |
| Ø | 200 mm |
| Ø _{CPV} | 150 mm |
| ⬮ | 207 kg |
| % | 78 % |



double spin

Detailed technical data for all designs are available on pages 36-37.

Fireplace insert

025L

KV 025L
KV 025L reduction
An insert fireplace design,
wide straight door look

- horizontal, straight frame and door
- tall burning chamber hat
- CAI – central air intake
- customizable legs
- frame is part of the insert
- chimney flap
- intended for convection as well as accumulation operation



| | |
|------------------|---------|
| P | 9.5 kW |
| P _r | 6-14 kW |
| P _a | – kW |
| ↑ | 1285 mm |
| ↔ | 693 mm |
| ↗ | 485 mm |
| Ø | 180 mm |
| Ø _{CPV} | 120 mm |
| ⬮ | 182 kg |
| % | 80 % |

Detailed technical data for all designs are available on pages 36-37.

Fireplace insert

025F

KV 025F 01
KV 025F 01 reduction
KV 025F 02
An insert fireplace design,
narrow vertical look

- vertical, even frame and door
- low burning chamber hat
- CAI – central air intake
- customizable legs
- frame is part of the insert
- chimney flap
- intended for convection as well as accumulation operation



| | |
|------------------|---------|
| P | 8 kW |
| P _r | 4-12 kW |
| P _a | – kW |
| ↑ | 1043 mm |
| ↔ | 460 mm |
| ↗ | 552 mm |
| Ø | 180 mm |
| Ø _{CPV} | 120 mm |
| ⬮ | 142 kg |
| % | 80 % |

Detailed technical data for all designs are available on pages 36-37.

Stove insert

025N

KV 025N 01
KV 025N 02
KV 025N 03
An insert fireplace design intended for permanent accumulation operation with draft systems.

- double glazing
- grate-free furnace
- CAI – central air intake

| | |
|------------------|----------|
| P | 11 kW |
| P _r | 10–30 kW |
| P _a | – kW |
| ↑ | 1208 mm |
| ↔ | 492 mm |
| ↗ | 684 mm |
| Ø | 180 mm |
| Ø _{CPV} | 150 mm |
| ⬮ | 180 kg |
| % | 85 % |



Detailed technical data for all designs are available on pages 36–37.

Stove vložka

025N BD

KV 025N 01 BD
KV 025N 02 BD
KV 025N 03 BD
An insert fireplace design intended for permanent accumulation operation with draft systems

- double glazing
- grate-free furnace
- CAI – central air intake
- back stoking

| | |
|------------------|----------|
| P | 11 kW |
| P _r | 10–30 kW |
| P _a | – kW |
| ↑ | 1221 mm |
| ↔ | 530 mm |
| ↗ | 665 mm |
| Ø | 180 mm |
| Ø _{CPV} | 150 mm |
| ⬮ | 182 kg |
| % | 85 % |



Detailed technical data for all designs are available on pages 36–37.

Fireplace insert

025W

KV 025W 01
KV 025W 02
An insert fireplace design, wide straight door look with hot-water exchanger

- horizontal, straight frame and door
- double or triple glazing (external design printed glazing, internal reflective glazing with mirror effect)
- CAI – central air intake
- air regulation through a single control element
- special COR-TEN steel sheeting
- cleaning opening for the exchanger tube plate
- heat exchanger incorporated cooling loop
- part of the insert is a re-cooling and venting valve

| | |
|------------------|---------|
| P | 12 kW |
| P _r | 6–18 kW |
| P _a | 8.4 kW |
| ↑ | 1256 mm |
| ↔ | 793 mm |
| ↗ | 495 mm |
| Ø | 180 mm |
| Ø _{CPV} | 150 mm |
| ⏏ | 300 kg |
| % | 90 % |



triple pass

Detailed technical data for all designs are available on pages 36-37.

Fireplace insert

025W BD

KV 025W 01 BD, KV 025W 02 BD
An insert fireplace design, wide straight door with hot-water exchanger and back stoking

- horizontal, straight frame and door, back stoking
- double or triple glazing (external design printed glazing, internal reflective glazing with mirror effect)
- CAI – central air intake
- air regulation through a single control element
- special COR-TEN steel sheeting
- cleaning opening for the exchanger tube plate
- heat exchanger incorporated cooling loop
- part of the insert is a re-cooling and venting valve

| | |
|------------------|---------|
| P | 12 kW |
| P _r | 6–18 kW |
| P _a | 8.4 kW |
| ↑ | 1272 mm |
| ↔ | 826 mm |
| ↗ | 595 mm |
| Ø | 180 mm |
| Ø _{CPV} | 150 mm |
| ⏏ | 300 kg |
| % | 90 % |



triple pass

Detailed technical data for all designs are available on pages 36-37.

Stove / fireplace insert

075

KV 075 01
KV 075 02
A cast iron insert

- small cast iron insert with chamotte furnace
- single or double glazing
- CAI – central air intake (diameter: 100 mm)
- customizable top or back flue exhaust
- small, high-quality furnace with efficient regulation and low
- output suitable for use in low-energy houses
- black printed design on the door glazing
- the fireplace insert has a removable built-in frame

| | |
|------------------|---------|
| P | 7 kW |
| P _r | 4-12 kW |
| P _d | – kW |
| ↑ | 1057 mm |
| ↔ | 466 mm |
| ↗ | 397 mm |
| Ø | 150 mm |
| Ø _{CAI} | 100 mm |
| ⬮ | 126 kg |
| % | 79 % |



Detailed technical data for all designs are available on pages 36-37.

Fireplace insert

075W

KV 075 W
An insert fireplace design
with hot-water exchanger

- fireplace insert with chamotte furnace
- double glazing
- CAI – central air intake
- small, high-quality furnace with efficient regulation
- and low output, suitable for use in low-energy houses
- customizable top or back flue exhaust
- black printed design on the door glazing

| | |
|------------------|---------|
| P | 12 kW |
| P _r | 6-16 kW |
| P _d | 8 kW |
| ↑ | 1542 mm |
| ↔ | 521 mm |
| ↗ | 533 mm |
| Ø | 180 mm |
| Ø _{CAI} | 120 mm |
| ⬮ | 225 kg |
| % | 83 % |



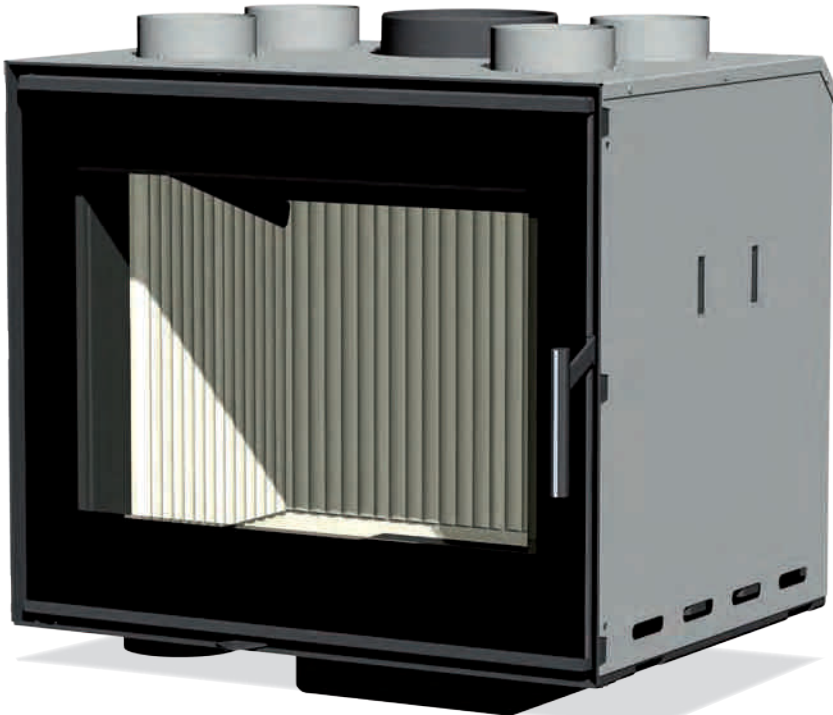
Detailed technical data for all designs are available on pages 36-37.

Fireplace insert

6.6.2

KV 6.6.2
A double-walled fireplace insert, convection operation

- double-wall fireplace insert intended for convection operation
- design glazing of furnace door
- CAI – central air intake
- the second wall contains four openings for hot-air distribution.
- the combination of chamotte and vermiculite in the furnace ensures high-quality, high-temperature and efficient combustion



| | |
|------------------|---------|
| P | 8 kW |
| P _r | 4-12 kW |
| P _a | – kW |
| ↑ | 683 mm |
| ↔ | 660 mm |
| ↗ | 495 mm |
| Ø | 180 mm |
| Ø _{CPV} | 120 mm |
| ⬮ | 135 kg |
| % | 78 % |

Detailed technical data for all designs are available on pages 36-37.

Fireplace insert

6.6.2 TV

KV 6.6.2 TV
An insert designed fireplace with hot-water exchanger

- fireplace door with glazing design
- CAI – central air intake
- chamotte furnace ensures high-quality, high-temperature and efficient combustion
- insert design with a hot-water exchanger



triple pass

| | |
|------------------|---------|
| P | 15 kW |
| P _r | 4-18 kW |
| P _a | 9 kW |
| ↑ | 947 mm |
| ↔ | 717 mm |
| ↗ | 510 mm |
| Ø | 180 mm |
| Ø _{CPV} | 120 mm |
| ⬮ | 200 kg |
| % | 82 % |

Detailed technical data for all designs are available on pages 36-37.

Fireplace insert

6.6.3 L/R

KV 6.6.3 L, KV 6.6.3 R
An insert fireplace design with a classic opening and glazed side wall

- fireplace insert with classic opening and glazed side wall
- right as well as left corner design options
- new DOUBLE SPIN flue gas system
- CAI – central air intake
- intended for convection as well as accumulation operation

| | |
|------------------|---------|
| P | 10 kW |
| P _r | 6-14 kW |
| P _a | – kW |
| ↑ | 1126 mm |
| ↔ | 685 mm |
| ↗ | 533 mm |
| Ø | 180 mm |
| Ø _{CPV} | 150 mm |
| ⬮ | 175 kg |
| % | 83 % |



double spin

Detailed technical data for all designs are available on pages 36-37.

Fireplace insert

6.6.3 C

KV 6.6.3 C
An insert fireplace design with a classic opening and double-sided glazing

- new DOUBLE SPIN flue gas system
- CAI – central air intake
- intended for convection as well as accumulation operation
- (optional) additional purchase of staging frame

| | |
|------------------|---------|
| P | 10 kW |
| P _r | 6-14 kW |
| P _a | – kW |
| ↑ | 1126 mm |
| ↔ | 720 mm |
| ↗ | 533 mm |
| Ø | 180 mm |
| Ø _{CPV} | 150 mm |
| ⬮ | 175 kg |
| % | 83 % |



double spin

Detailed technical data for all designs are available on pages 36-37.

Fireplace insert

6.6.4

KV 6.6.4
An insert fireplace design
with fans

- fireplace insert with automatic fan start-up
- two-speed switch for fan
- manual and automatic operation of fan
- fireplace door with glazing design
- convection covering
- chamotte furnace ensures high-quality, high-temperature and efficient combustion



| | |
|------------------|---------|
| P | 8 kW |
| P _r | 4-12 kW |
| P _a | – kW |
| ↑ | 520 mm |
| ↔ | 690 mm |
| ↗ | 421 mm |
| Ø | 150 mm |
| Ø _{CPV} | – mm |
| ⬮ | 135 kg |
| % | 72 % |

Detailed technical data for all designs are available on pages 36-37.

Fireplace insert

RIO W 01

KV RIO W 01
An insert fireplace design
with hot-water exchanger

- fireplace insert with a hot-water exchanger
- hot-water exchanger with triple pass system
- wide glazing of furnace door
- chamotte furnace ensures high-quality, high-temperature and efficient combustion
- service door for cleaning the exchanger



| | |
|------------------|---------|
| P | 13 kW |
| P _r | 8-16 kW |
| P _a | 9 kW |
| ↑ | 1256 mm |
| ↔ | 867 mm |
| ↗ | 449 mm |
| Ø | 150 mm |
| Ø _{CPV} | – mm |
| ⬮ | 250 kg |
| % | 83 % |







Detailed technical data for all designs are available on pages 36-37.

Technical parameters for fireplace inserts

| Model - Code | Specifications | Nominal Output (kW) | Regulated Output (kW) | Hot-Air Output (kW) | Hot-Water Output at the Nominal Output (kW) | Efficiency (%) | Chimney Draft (Pa) | Weight (kg) | Dimensions H x W x D (mm) | Flue Diameter (mm) | CAI Diameter (mm) |
|---------------|--|---------------------|-----------------------|---------------------|---|----------------|--------------------|-------------|---------------------------|--------------------|--------------------|
| KV 055A N | design - wide even | 9.5 | 6-14 | 9.5 | | 80 | 12 | 298 | 1432 x 1014 x 588 | 180 | 150 |
| KV 055A N/AKU | design - wide even ring reduction | 9.5 | 6-14 | 9.5 | | 80 | 12 | 295 | 1432 x 1014 x 616 | 180 | 150 |
| KV 055B N | design - wide even | 9.5 | 6-14 | 9.5 | | 80 | 12 | 258 | 1432 x 794 x 588 | 180 | 150 |
| KV 055B N/AKU | design - wide even ring reduction | 9.5 | 6-14 | 9.5 | | 80 | 12 | 255 | 1432 x 794 x 616 | 180 | 150 |
| KV 065A N | design - wide even | 12 | 8-16 | 12 | | 80 | 12 | 338 | 1432 x 1234 x 588 | 250 | 150 |
| KV 055A | design - wide even | 9.5 | 6-14 | 9.5 | | 80 | 12 | 235 | 1451 x 968 x 520 | 180 | 150 |
| KV 055A/AKU | design - wide even ring reduction | 9.5 | 6-14 | 9.5 | | 80 | 12 | 231 | 1274 x 968 x 520 | 180 | 150 |
| KV 055B | design - even | 9.5 | 6-14 | 9.5 | | 80 | 12 | 200 | 1451 x 747 x 520 | 180 | 150 |
| KV 055B/AKU | design - wide even ring reduction | 9.5 | 6-14 | 9.5 | | 80 | 12 | 198 | 1275 x 747 x 520 | 180 | 150 |
| AL2LE01 | fireplace insert - corner, lifting door with bent glazing | 7 | 4-11 | 7 | | 85 | 12 | 265 | 1430 x 743 x 605 | 200 | 150 |
| AR2LE01 | fireplace insert - corner, lifting door with bent glazing | 7 | 4-11 | 7 | | 85 | 12 | 265 | 1430 x 743 x 605 | 200 | 150 |
| AL2LE05 | fireplace insert - corner, lifting door with split glazing | 7 | 4-11 | 7 | | 85 | 12 | 265 | 1430 x 743 x 605 | 200 | 150 |
| AR2LE05 | fireplace insert - corner, lifting door with split glazing | 7 | 4-11 | 7 | | 85 | 12 | 265 | 1430 x 743 x 605 | 200 | 150 |
| AL2SE01 | fireplace insert - corner, door with bent glazing | 7 | 4-11 | 7 | | 85 | 12 | 195 | 1348 x 741 x 568 | 200 | 150 |
| AR2SE01 | fireplace insert - corner, door with bent glazing | 7 | 4-11 | 7 | | 85 | 12 | 195 | 1348 x 741 x 568 | 200 | 150 |
| AL2SE05 | fireplace insert - corner, door with split glazing | 7 | 4-11 | 7 | | 85 | 12 | 195 | 1348 x 741 x 568 | 200 | 150 |
| AR2SE05 | fireplace insert - corner, door with split glazing | 7 | 4-11 | 7 | | 85 | 12 | 195 | 1348 x 741 x 568 | 200 | 150 |
| AL2LF01 | fireplace insert - corner, lifting door with bent glazing | 12 | 4-12 | 12 | | 83 | 12 | 320 | 1430 x 963 x 605 | 200 | 150 |
| AR2LF01 | fireplace insert - corner, lifting door with bent glazing | 12 | 4-12 | 12 | | 83 | 12 | 320 | 1430 x 963 x 605 | 200 | 150 |
| AL2LF05 | fireplace insert - corner, lifting door with split glazing | 12 | 4-12 | 12 | | 83 | 12 | 320 | 1430 x 963 x 605 | 200 | 150 |
| AR2LF05 | fireplace insert - corner, lifting door with split glazing | 12 | 4-12 | 12 | | 83 | 12 | 320 | 1430 x 963 x 605 | 200 | 150 |
| AL2SF01 | fireplace insert - corner, door with bent glazing | 12 | 4-12 | 12 | | 83 | 12 | 245 | 1418 x 961 x 568 | 200 | 150 |
| AR2SF01 | fireplace insert - corner, door with bent glazing | 12 | 4-12 | 12 | | 83 | 12 | 245 | 1418 x 961 x 568 | 200 | 150 |
| AL2SF05 | fireplace insert - corner, door with split glazing | 12 | 4-12 | 12 | | 83 | 12 | 245 | 1418 x 961 x 568 | 200 | 150 |
| AR2SF05 | fireplace insert - corner, door with split glazing | 12 | 4-12 | 12 | | 83 | 12 | 245 | 1418 x 961 x 568 | 200 | 150 |

| Model - Code | Specifications | Nominal Output (kW) | Regulated Output (kW) | Hot-Air Output (kW) | Hot-Water Output at the Nominal Output (kW) | Efficiency (%) | Chimney Draft (Pa) | Weight (kg) | Dimensions H x W x D (mm) | Flue Diameter (mm) | CAI Diameter (mm) |
|----------------|---|---------------------|-----------------------|---------------------|---|----------------|--------------------|-------------|---------------------------|--------------------|--------------------|
| D2L01 | fireplace insert - tall even double glazing | 7.5 | 5-12 | 7.5 | | 85 | 12 | 160 | 1140 x 524 x 475 | 200 | 150 |
| DB2L01 | fireplace insert - tall even double glazing, back stoking | 7.5 | 5-12 | 7.5 | | 85 | 12 | 175 | 1140 x 524 x 541 | 200 | 150 |
| KV 025L N01 | fireplace insert - wide even double glazing | 11 | 7-16 | 11 | | 78 | 12 | 207 | 1131 x 722 x 555 | 200 | 150 |
| KV 025L | fireplace insert - even | 9.5 | 6-14 | 9.5 | | 80 | 10 | 182 | 1285 x 693 x 485 | 180 | 120 |
| KV 025L/AKU | fireplace insert - even ring reduction | 9.5 | 6-14 | 9.5 | | 80 | 10 | 180 | 1100 x 693 x 485 | 180 | 120 |
| KV 025F 01 | fireplace insert - even short | 8 | 4-12 | 8 | | 80 | 12 | 142 | 1043 x 460 x 552 | 180 | 120 |
| KV 025F 01/AKU | fireplace insert - even short ring reduction | 8 | 4-12 | 8 | | 80 | 12 | 150 | 1043 x 460 x 552 | 180 | 120 |
| KV 025F 02 | fireplace insert - even tall | 8 | 4-12 | 8 | | 80 | 12 | 152 | 1288 x 460 x 552 | 180 | 120 |
| KV 025N 01 | stove insert - dome | 11 | 10-30 | 20 | | 85 | 12 | 180 | 1208 x 492 x 684 | 180 | 150 |
| KV 025N 02 | stove insert - with HE | 20 | 10-30 | 15 | 5 | 86 | 12 | 270 | 1457 x 492 x 684 | 180 | 150 |
| KV 025N 03 | stove insert - ring reduction | 11 | 10-30 | 20 | | 85 | 12 | 177 | 959 x 492 x 684 | 180 | 150 |
| KV 025N 01 BD | stove insert - dome, back stoking | 11 | 10-30 | 20 | | 85 | 12 | 182 | 1221 x 530 x 665 | 180 | 150 |
| KV 025N 02 BD | stove insert - with HE, back stoking | 20 | 10-30 | 15 | 5 | 86 | 12 | 275 | 1469 x 530 x 665 | 180 | 150 |
| KV 025N 03 BD | stove insert - ring reduction, back stoking | 11 | 10-30 | 20 | | 85 | 12 | 180 | 972 x 530 x 665 | 180 | 150 |
| KV 025W 01 | fireplace insert - wide even double glazing with HE | 12 | 6-18 | 3.6 | 8.4 | 90 | 12 | 300 | 1256 x 793 x 495 | 180 | 150 |
| KV 025W 02 | fireplace insert - wide even triple glazing with HE | 12 | 6-18 | 3 | 9 | 90 | 12 | 334 | 1256 x 840 x 503 | 180 | 150 |
| KV 025W 01 BD | fireplace insert - wide even double glazing with HE | 11.5 | 6-18 | 5 | 7 | 90 | 12 | 300 | 1272 x 826 x 595 | 180 | 150 |
| KV 025W 02 BD | fireplace insert - wide even triple glazing with HE | 11.5 | 6-18 | 4 | 8 | 90 | 12 | 307 | 1272 x 826 x 595 | 180 | 150 |
| KV 075 01 | fireplace insert - single glazing | 7 | 4-12 | 7 | | 79 | 10 | 126 | 1057 x 466 x 397 | 150 | 100 |
| KV 075 02 | fireplace insert - double glazing | 7 | 4-12 | 7 | | 79 | 10 | 126 | 1057 x 466 x 397 | 150 | 100 |
| KV 075W | fireplace insert - double glazing with HE | 12 | 6-16 | 4 | 8 | 83 | 12 | 225 | 1542 x 521 x 533 | 180 | 120 |
| KV 6.6.2 | fireplace insert - wide even single glazing | 8 | 4-12 | 8 | | 79 | 12 | 135 | 683 x 660 x 495 | 180 | 120 |
| KV 6.6.2 TV | fireplace insert - wide even single glazing | 15 | 4-18 | 6 | 9 | 82 | 12 | 200 | 947 x 717 x 510 | 180 | 120 |
| KV 6.6.3 L | fireplace insert - wide even single glazing, with side glazing | 10 | 6-14 | 10 | | 83 | 12 | 175 | 1126 x 685 x 533 | 180 | 150 |
| KV 6.6.3 R | fireplace insert - wide even single glazing, with side glazing | 10 | 6-14 | 10 | | 83 | 12 | 175 | 1126 x 685 x 533 | 180 | 150 |
| KV 6.6.3 C | fireplace insert - wide even single glazing, with double-side glazing | 10 | 6-14 | 10 | | 83 | 12 | 175 | 1126 x 720 x 533 | 180 | 150 |
| KV 6.6.4 | fireplace insert - wide even single glazing | 8 | 4-12 | 8 | | 72 | 12 | 135 | 520 x 690 x 421 | 150 | - |
| RIO W 01 | fireplace insert - even with HE | 13 | 8-16 | 4 | 9 | 83 | 12 | 250 | 1256 x 867 x 449 | 150 | - |

Legend

| | | | | | |
|----------------------|--|---|--------|---|-----------------------------|
| P | Nominal Output |  | Height |  | Smoke-flue diameter |
| P_R | Regulated Output |  | Width |  | Central air intake diameter |
| P_s | Hot-Water Output at the Nominal Output |  | Depth |  | Weight |
| | | | |  | Efficiency |

Notes



ROMOTOP spol. s r. o.
Komenského 325
742 01 Suchdol nad Odrou
Czech Republic

www.romotop.com

